

Systems Note 28

Jupyter on Linux

Hardware - Mac mini (2018)

OS - macOS Catalina 10.15.5

Emulation - VirtualBox 6.1.12 r139181 (Qt5.6.3) at install time

Emulated OS - Ubuntu 20

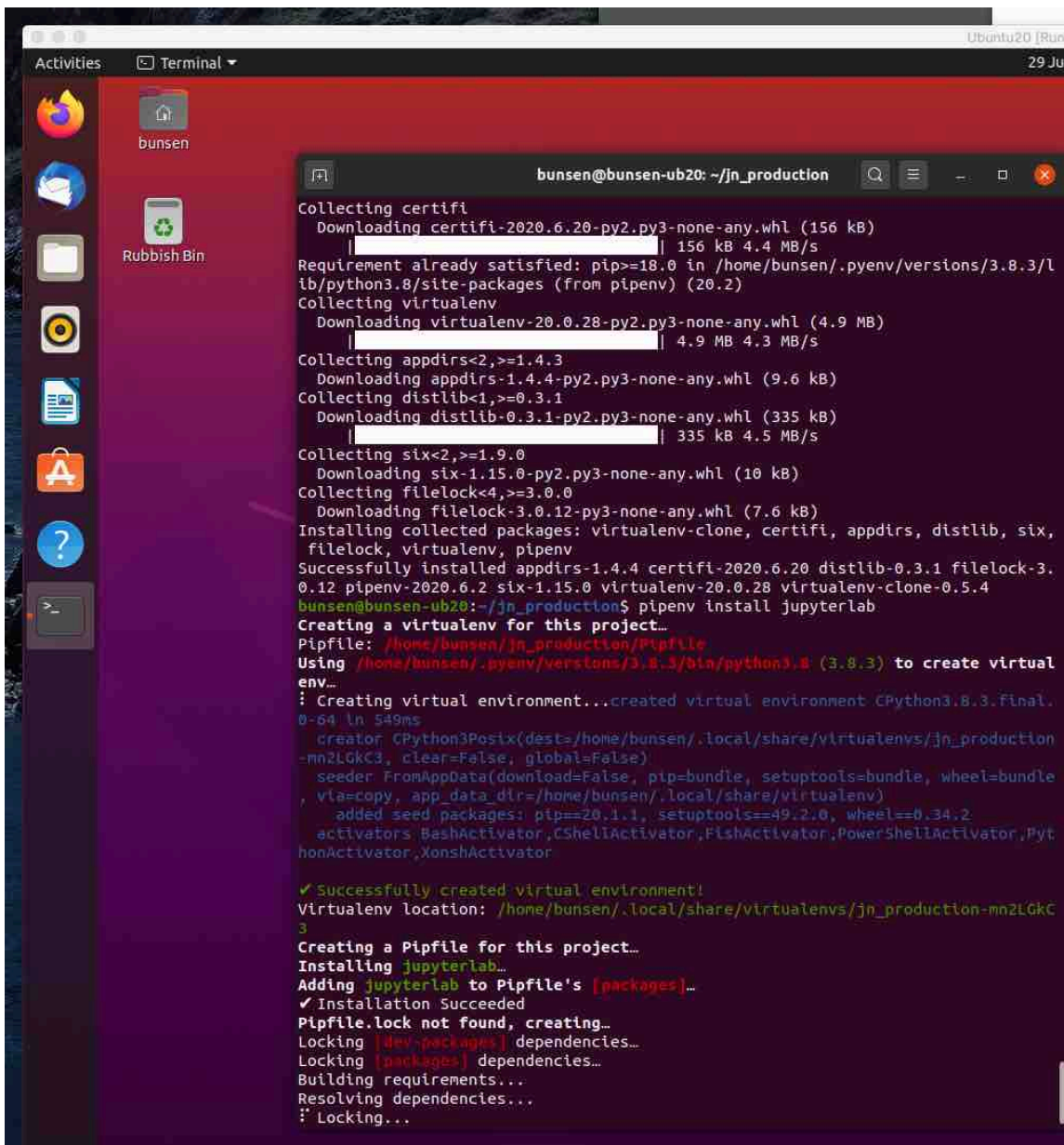
In ubuntu `uname -a` shows Linux 5.4.0-42-generic #46-Ubuntu SMP Fri Jul 10 2020 x86_64 x3 GNU/Linux

In terminal to enter the pyenv version created in Note27

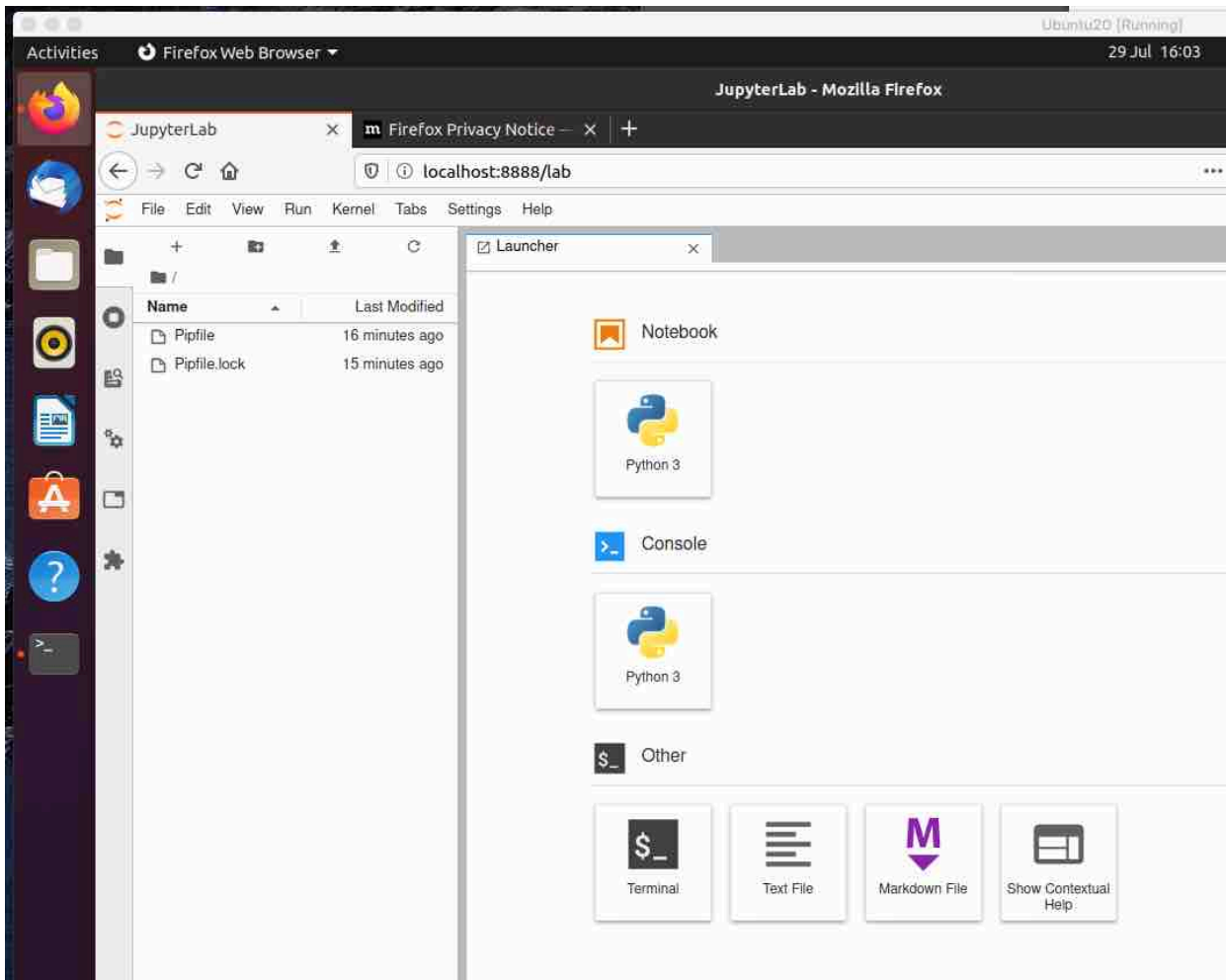
```
cd ~/jfn_production
```

```
pipenv install jupyterlab
```

```
pipenv shell
```



jupyter-lab



Close and halt kernel