

# Systems Note 2

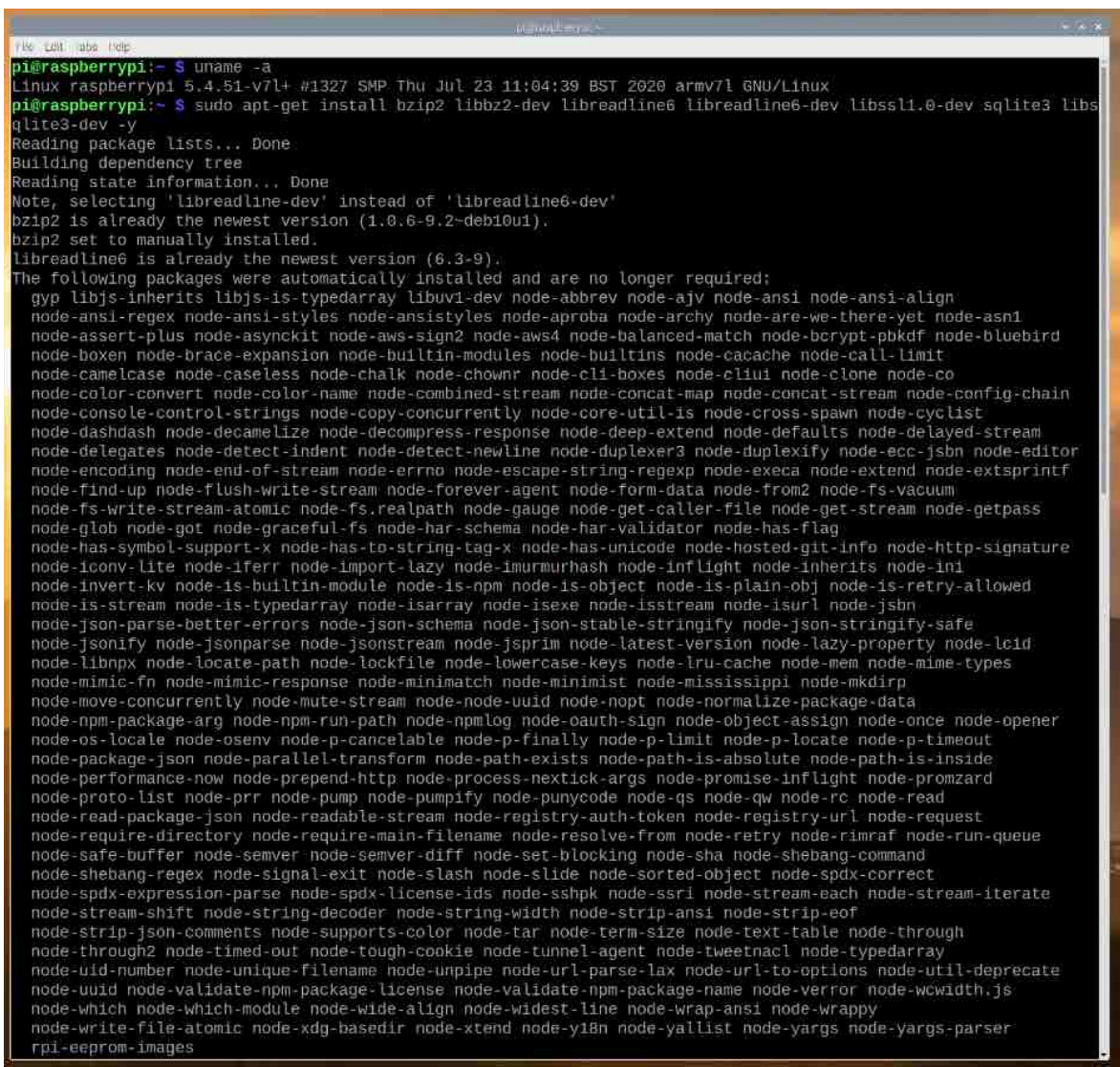
## Jupyter on Raspberry Pi

Hardware - Raspberry Pi 4 4GB RAM

OS - Raspberry Pi OS (32 bit) with desktop and recommended software Version May 2020 Kernel 4.19

uname -a gives Linux raspberrypi 5.4.51-v7l+ #1327 SMP date armv7l GNU/Linux

In Terminal. sudo apt-get install bzip2 libbz2-dev libreadline6-dev libffi-dev libssl1.0-dev sqlite3 libsqlite3-dev -y



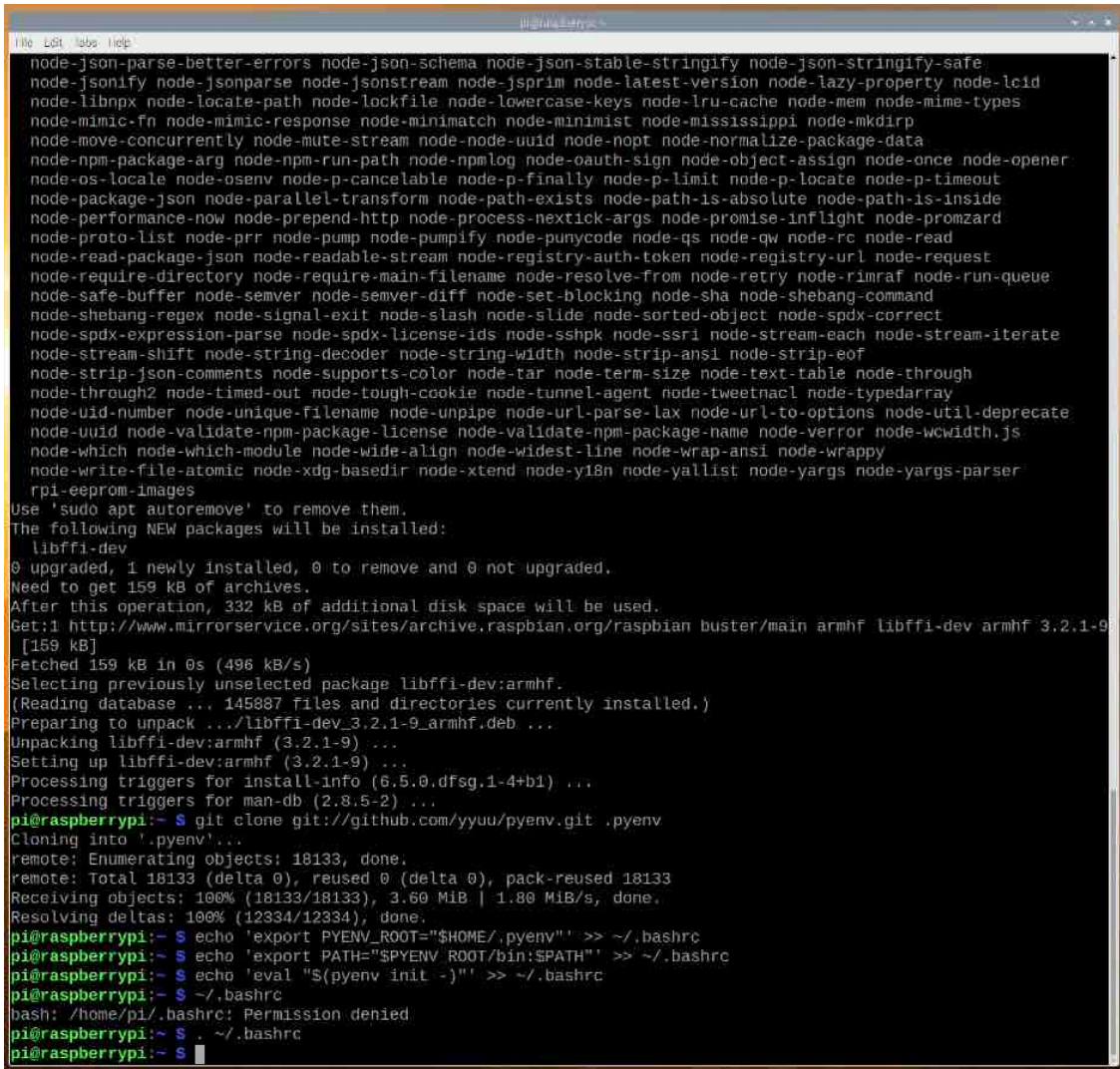
git clone [git://github.com/yyuu/pyenv.git](https://github.com/yyuu/pyenv.git) .pyenv

echo 'export PYENV\_ROOT="\$HOME/.pyenv"' >> ~/.bashrc

echo 'export PATH="\$PYENV\_ROOT/bin:\$PATH"' >> ~/.bashrc

echo 'eval "\$(pyenv init -)"' >> ~/.bashrc

~/.bashrc



pyenv install 3.8.3

pyenv versions

mkdir jn\_production

cd jn\_production

pyenv local 3.8.3

python -V

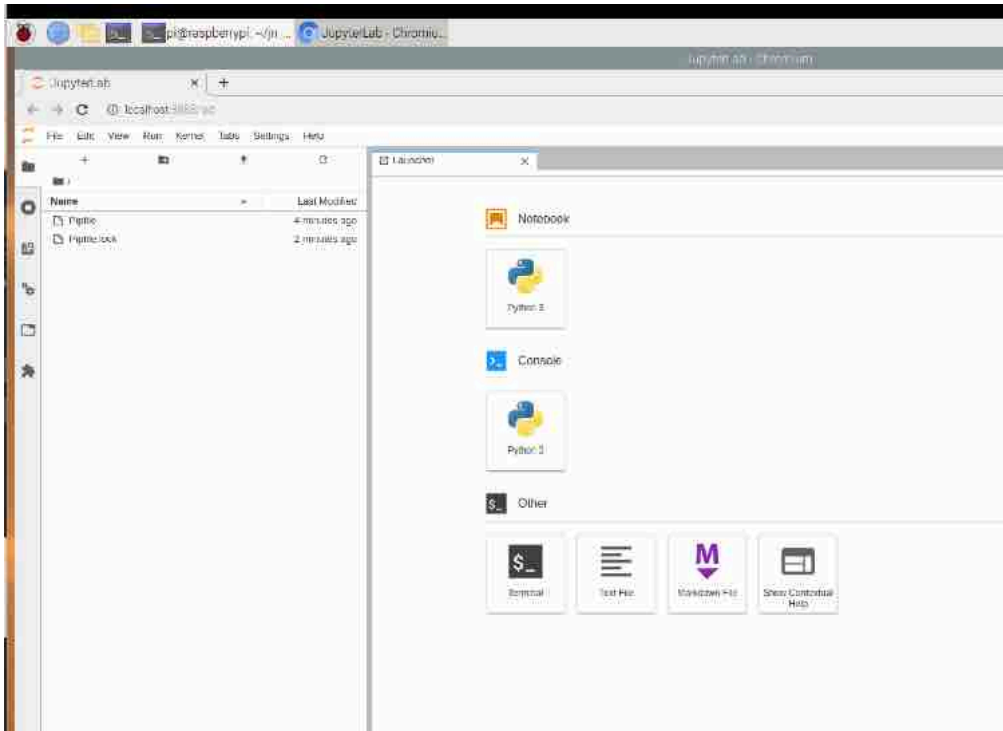
pip install --upgrade pip

pip install pipenv

pipenv install jupyterlab

pipenv shell

jupyter-lab



If accessing remotely such as from an iPad then set up for password rather than token

In Terminal still in the jn\_production directory (which controls the python version through pyenv) and with pipenv shell active (command line starts (jn\_production) to keep the packages on a per environment basis):

jupyter-notebook password

Start the notebook as a server with the command:

jupyter-notebook - -no-browser - -ip=yourRPiIPAddr - -port=8888 &