

Systems Note 17

Octave on Apple

Hardware - Intel Mac mini (2018)

OS - macOS Catalina 10.15.6

uname -a gives Darwin 19.6.0 Jul 5 2020 xnu-6153.141.1~9/RELEASE_X86_64

In Terminal

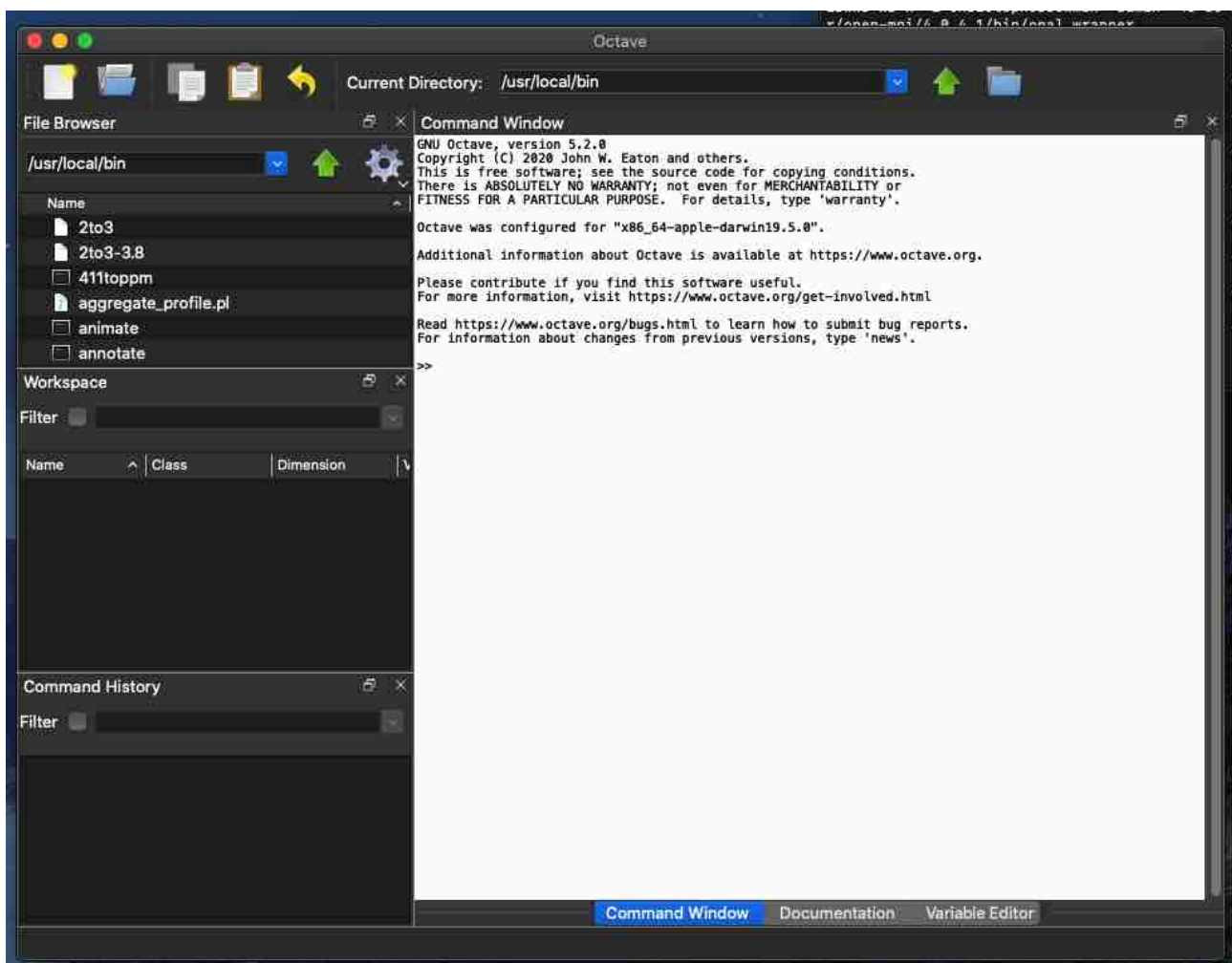
brew update

brew install octave

Installs to /usr/local/bin so to run:

In terminal

octave --gui



GUI version not stable but only using as kernel or as command line Octave